

2016 RurAL CAP Housing Programs



The Planning and Construction Division assists rural communities and low-income people by increasing affordable housing opportunities and preserving and improving existing housing. RurAL CAP is one of many organizations responsible for weatherizing homes in Alaska. The main goal of the Weatherization Assistance Program is to conserve energy. The Senior Access and Home Modifications programs provide a wide range of home accessibility measures from wheelchair ramps to roll-in showers making it easier for people with disabilities to enjoy a greater degree of independence. The Self-Help Housing program provides affordable housing for low-income families and first-time homebuyers. Qualifying families contribute home-building labor under the guidance of a skilled construction supervisor.

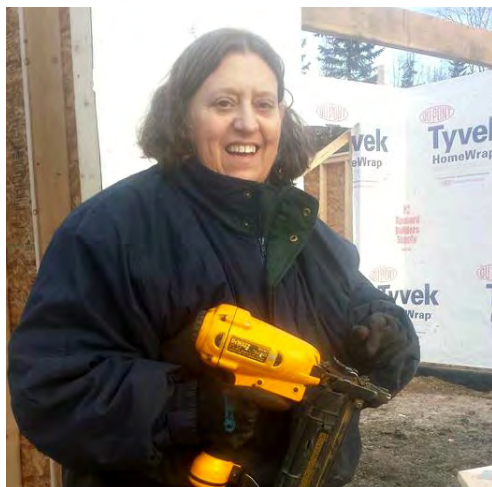
The Supportive Housing Division provides safe, attractive and affordable housing units in Anchorage. Affordable Housing provides rental apartments to individuals with limited credit and rental history. The Division also provides housing for individuals who experience homelessness, serious mental illness and substance use disorders. An example of this type of housing is Karluk Manor, the inaugural Housing First facility in Alaska. Supportive Housing helps build strong, healthy communities by improving the safety of neighborhoods, beautifying city blocks, and stabilizing property values.

2015 Results

- Acquired Safe Harbor Inn and Sitka Place, two Anchorage-based facilities providing safe housing to low-income families
- Built 6 Self-Help homes near Soldotna for a total of 50 homes to date; new grant funding will support 11 additional units in the central Kenai Peninsula area
- Assisted 68 Alaskans with disabilities through the Senior Access and the DHSS Home Modifications programs
- Acquired 106 units of new and safe affordable housing
- 232 tenants with disabilities retained housing
- A 2015 report on Housing First programs in Alaska conducted by the University of Alaska Institute for Circumpolar Health Studies indicates tenants have fewer symptoms of depression and decreased their use of all emergency services
- Energy-efficiency improvements to 496 homes weatherized in 8 communities (154 homes in 6 rural communities; 58 units in Juneau; and 284 units in Anchorage)

Weatherization workers build a wheel-chair ramp in Quinhagak as a part of the Home Modifications program.
Photo by Charlie Ess





Self-Help Housing homeowners, Robin Nardini (at left) and Ryan McMilin (at right), put in 'sweat equity' to build their homes in Soldotna. Photos by Mi'shell French